



WESSEX INTUMESCENT SUPPLIES LTD

Unit 22, Regent Trade Park, Barwell Lane, Gosport, Hants. PO13 0EQ

Fire, Draught, Weather & Acoustic Seals
Conservatory Roof Glazing Systems

Tel: 01329 221111 Fax: 01329 221122

Email: sales@wis-ltd.com

Website: www.wis-ltd.com

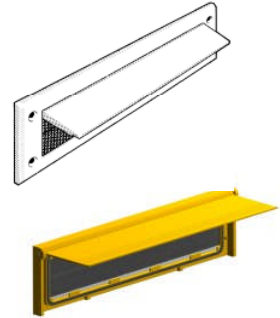
Letter Box Seals

DESCRIPTION

Letter box seals are supplied with an integrated hardwearing nylon brush and an external flap to provide an aesthetically pleasing finish, suitable for domestic & commercial use.

BENEFITS

- Excellent draught proofing properties
- Independent movement of brush strip filaments will even seal around partially inserted mail
- Extremely durable and hardwearing nylon filaments
- Tough resilient plastic frame with pvc or metal flaps
- Concealed brush strip seal



AVAILABILITY

<i>PVC Flap</i>	<i>Overall Size</i>	<i>Aperture Size</i>	<i>Cut Door Aperture</i>
White or Brown	340mm x 80mm	280mm x 45mm	292mm x 60mm
<i>Metal Flap</i>	<i>Overall Size</i>	<i>Aperture Size</i>	<i>Cut Door Aperture</i>
Aluminium or Gold	292mm x 76mm	254mm x 40mm	266mm x 54mm
Black or White	292mm x 76mm	254mm x 40mm	266mm x 54mm
Chrome	292mm x 76mm	254mm x 40mm	266mm x 54mm

INSTALLATION

Position letterplate over the letterbox opening on the inside of the door. Ensure the seal is level and symmetrical around the opening and fix into position using 25mm x Ø 3.5mm (no. 6) plated or stainless steel countersunk screw fixings. Check that flap is operating correctly and that seal is not causing obstruction. Re-align if necessary.

MAINTENANCE

No maintenance required other than periodic cleaning with a damp cloth or detergent. Brush strip products can not be overpainted.

STORAGE

Products should be stored in dry conditions taking care not to crush or damage the flexible seals.

HEALTH AND SAFETY

The product does not present any known health hazards during or after installation. Normal good industrial and personal hygiene practises should be observed.